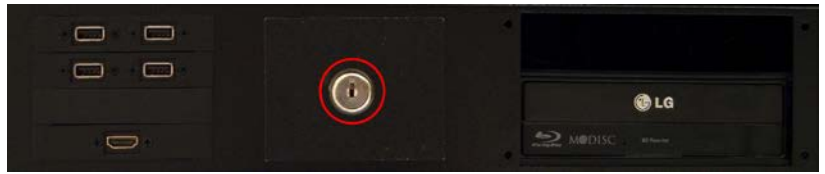
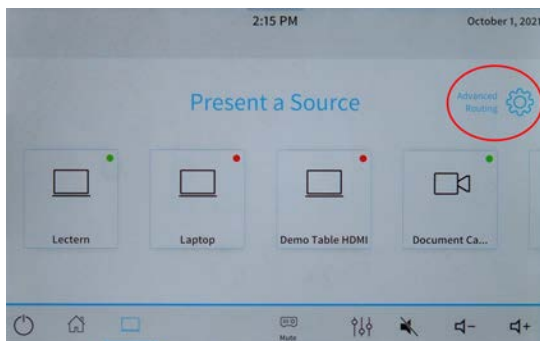
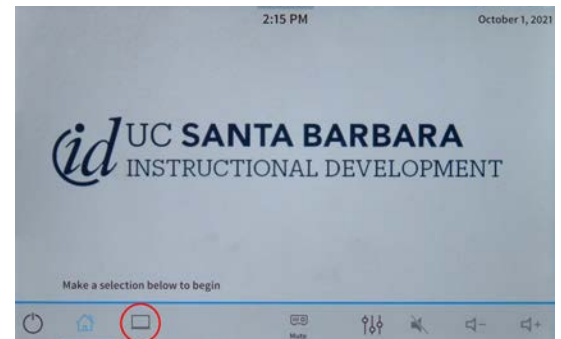


How to Operate this Computer Lectern

1) The switch panel is in the middle of the rack in the lectern. Insert your key in the key switch (circled in red), and turn it clockwise.



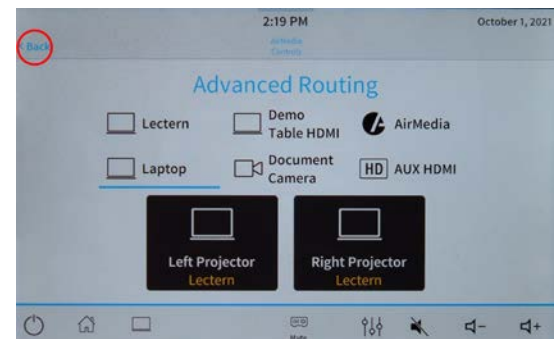
2) The screen shown at right appears. Touch the icon in the shape of a computer screen, (circled in red). (If the screen is dark, touch it to turn it on.)



3) The screen shown at left appears. To select a source, touch its tile. This turns on the right projector. For sources that are not shown, swipe left on the screen. If you wish to project from more than one source (or projector), touch the “Advanced Routing” icon at top right

(circled in red above).

4) The screen shown at right appears. Choose a source by touching its tile, and then touch the tile for the projector to which you wish to send it. To return to the previous screen, touch “Back” at the top left corner.



5) To blank a projector image, touch the icon labeled “Mute.” On the black window that appears, touch the icon for the projector whose image you wish to blank. To close this window, touch the red “X” at the top right corner.

The speaker icons allow you to mute the audio, or to raise or lower the volume.